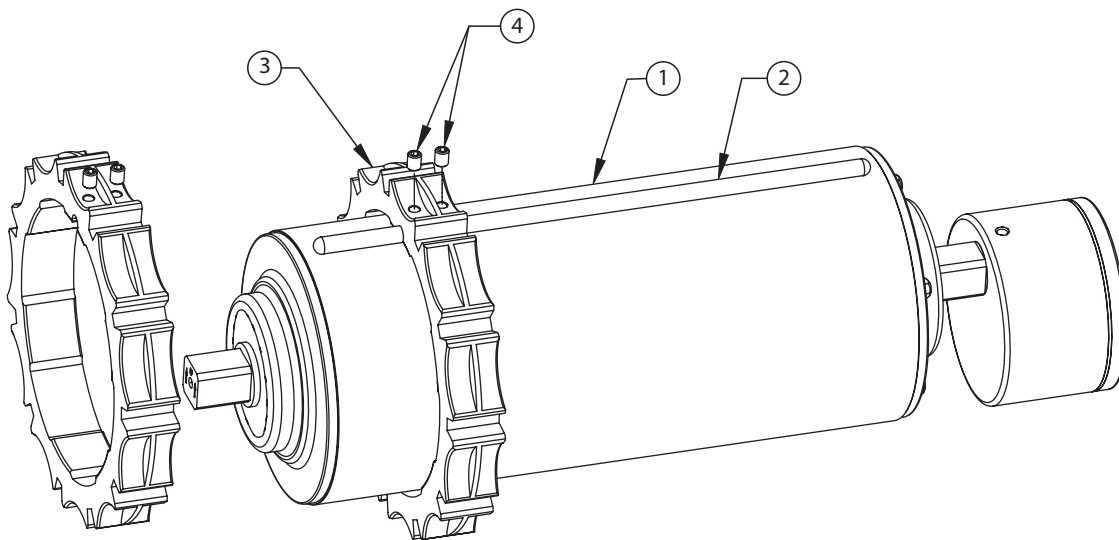


## Drum Motor with Sprockets (STM) Assembly Procedure

1. Align pin slot in Sprocket (3) to the welded pin (2) on the shell (1).
2. Slide sprocket (3) over the Drum Motor shell (1).
3. Insert Set Screw (4) in their respected holes.
4. Repeat the sequence for the balance of the Sprockets.
5. Space Sprockets on the face of the shell to match belt pockets.
6. Lock center Sprocket/s by lightly tightening set screws.

### IMPORTANT NOTE:

- Observe not to deform the sprocket by excessively tightening set screws.
- Ensure that locked Sprockets in head and tail pulleys are corresponding to the same pockets in the belt.



Parts Required	
Item Number	Description
1	Drum Motor Shell
2	Welded Pin
3	Sprocket
4	Set Screw (2 per Sprocket)

306 (11/2007)